

ESM methods

Size of fish at settlement

From Lizard Island, fish were collected in 1) light traps in November 2004 to January 2005 and in December 2005, using the same methods as for the larvae used in the laboratory experiment (see Materials and methods section); 2) light traps placed 50 m from the Lizard Island reef overnight on 19–28 November and 18–27 December 1995, and 13–24 January 1996 by Peter J. Doherty, Australian Institute of Marine Science (AIMS); and 3) from published literature (see electronic supplementary materials, ESM Table S1).

Most fish were collected immediately prior to settlement. However, to increase the range of families, we included some species collected from the reef. Such fish had been described as “newly settled” (Bellwood 1985), “transparent” (Bellwood and Choat 1989; Labridae: Scarinae), and “immature” (Grutter 2000), or had been aged using otoliths as zero days post-settlement (Green 1994; Labridae); if several fish were listed, the smallest individual was selected.

One individual was collected by a diver in the pelagic environment near the reef in French Polynesia (Doherty et al. 1995; Zanclidae). The Diodontidae (Leis 1978) were from Eastern Pacific (7°47'N, 85°45'W, 180 mm SL) and Acapulco, Mexico (191 mm SL) and the Ehippidae (Leis et al. 2007) was from “coral reefs”; how they were collected was not described. Gobiidae species were from Orpheus Island, Australia (18°38'6" S, 146°29'42"E) and involved newly settled individuals collected off the reef at weekly intervals (Hernaman 2003). One species was artificially reared to settlement stage from fertilized eggs collected off the reef in Palau (Sadovy et al. 2001; Callionymidae); it was included because of its unusually small size. *Acanthochromis polyacanthus* (Pomacentridae) was included because it is the only species on the GBR that does not have a pelagic larval phase (Robertson 1973).

Where only total length (TL) was available (some published studies, *Labroides dimidiatus*), it was converted to standard length (SL) by dividing TL by the assumed ratio of TL:SL of 1.22. The mean size was used and the standard error was provided, except where $n = 1$ and where stated (see below). For the data collected by AIMS, where fish developmental stage was not documented, only species that had a sample size ≥ 8 , had one clear mode when the size frequency distribution was plotted, and where the mean and the median were within ± 2 mm were included; except for *Diploprion bifasciatum* (Serranidae) where the mode was skewed towards larger individuals and the median was used.

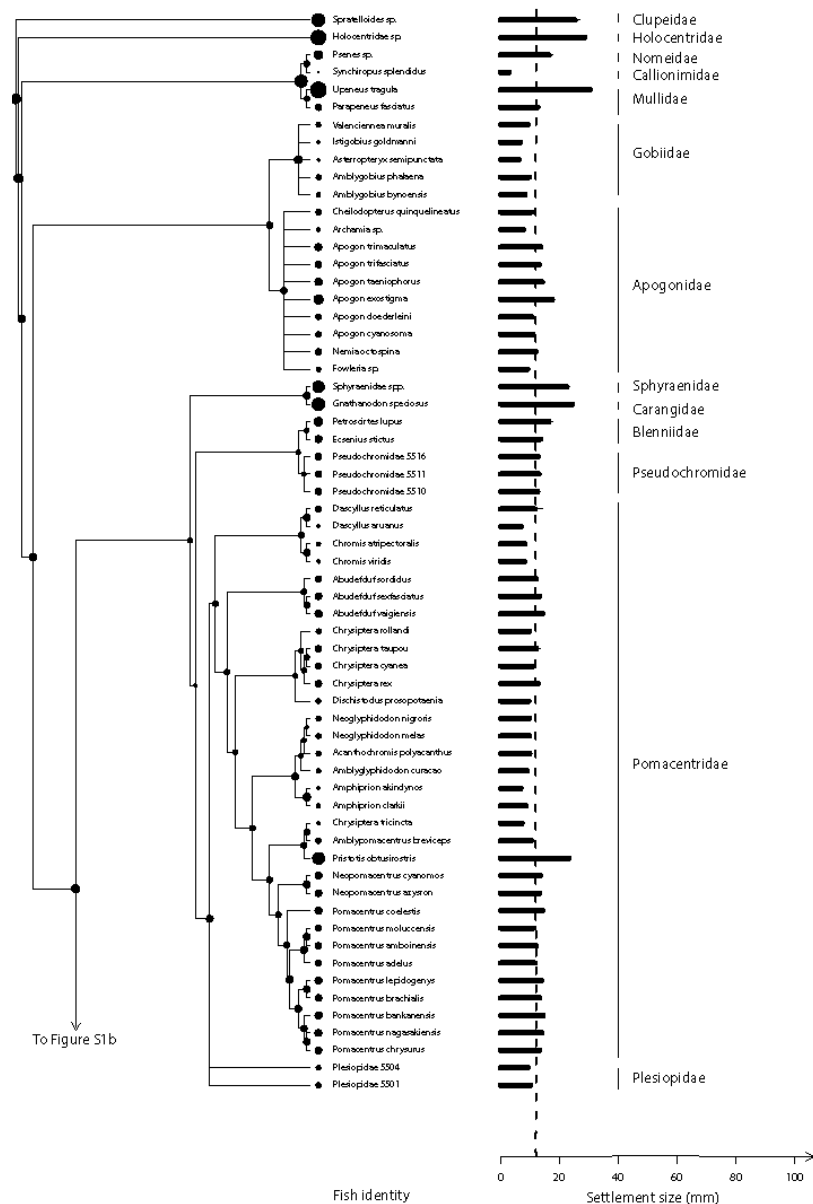
We only used fish species or types where it was clear they represented unique groups that did not have the potential for overlap among the various data sources. Where data for the same species was available from more than one source, the source was selected based on whether the sample size was available and of these the source that had the largest sample size was used. In species where only a range (*Cheilodopterus quinquelineatus*, Apogonidae; *Cephalopholis* sp., Epinephelidae; *Chlorurus sordidus*, Labridae) or only the largest sizes observed in the plankton and on the reef (*Diodon hystrix*, Diodontidae) was available, the midpoint was used.

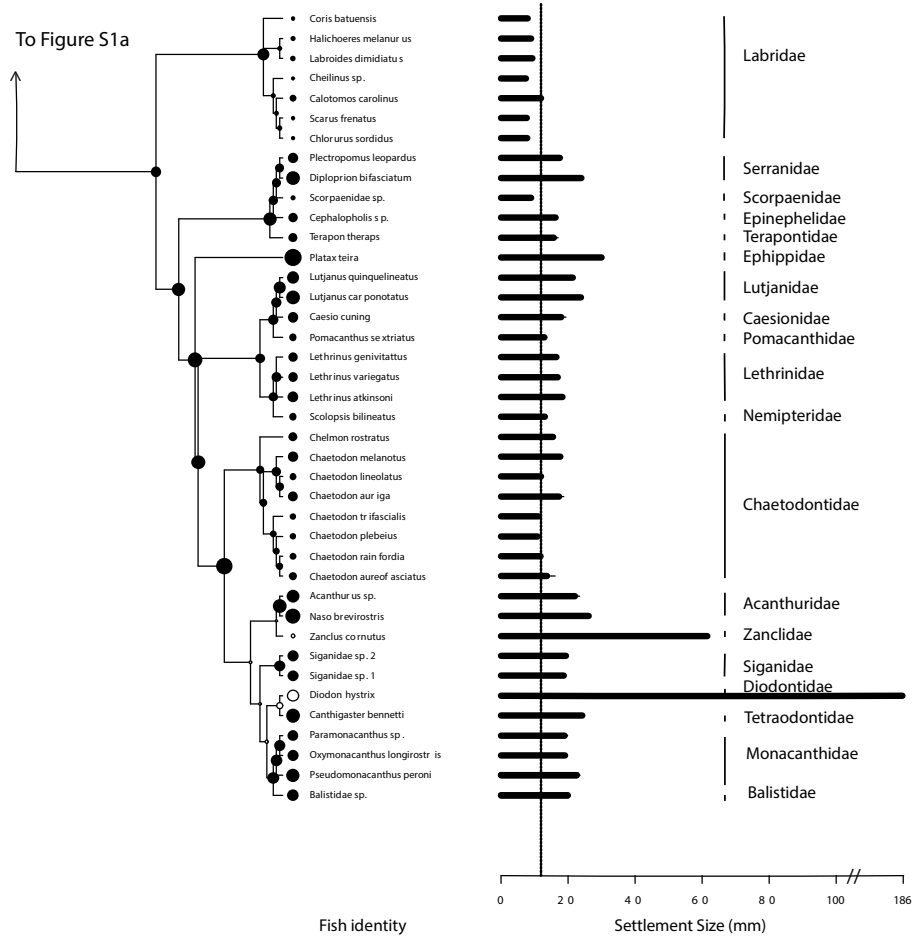
To examine what proportion of the species of Lizard Island we had sampled, we determined all the species at Lizard Island per family using species records and calculated the percent sampled. A list of all fish records was obtained using The Atlas of Living Australia (<http://spatial.ala.org.au>); this was cross-checked against the Lizard Island Field Guide (<http://lifg.australianmuseum.net.au>) for missing species records by Dr Anne Hoggett, Co-Director of Lizard Island Research Station. Only species in the “Lizard Island Group” were included.

References

- Bellwood DR (1985) The functional morphology, systematics, and behavioural ecology of parrotfishes (family Scaridae). PhD thesis, James Cook University, Townsville, 487 pp
- Bellwood DR, Choat JH (1989) A description of the juvenile phase colour patterns of 24 parrotfish species (Family Scaridae) from the Great Barrier Reef, Australia. *Records of the Australian Museum* 41:1–41
- Doherty PJ, Dufour V, Planes S (1995) Reef Sites. *Coral Reefs* 14:26
- Green AL (1994) The early life history of labroid fishes at Lizard Island, Northern Great Barrier Reef. PhD thesis, James Cook University, Townsville
- Grutter AS (2000) Ontogenetic variation in the diet of the cleaner fish *Labroides dimidiatus* and its ecological consequences. *Mar Ecol Prog Ser* 197:241–246
- Hernaman V (2003) A comparative analysis of the life history and ecology of five species of coral reef goby. PhD thesis, University of Otago, Dunedin
- Leis JM (1978) Systematics and zoogeography of porcupinefishes (*Diodon*, diodontidae, tetraodontiformes), with comments on egg and larval development. *Fish Bull* 76:535–567
- Leis JM, Hay AC, Lockett MM, Chen JP, Fang LS (2007) Ontogeny of swimming speed in larvae of pelagic-spawning, tropical, marine fishes. *Mar Ecol Prog Ser* 349:255–267
- Robertson DR (1973) Field observations on the reproductive behaviour of a pomacentrid fish, *Acanthochromis polyacanthus*. *Zeitschrift Für Tierpsychologie* 32:319–324
- Sadovy Y, Mitcheson G, Rasotto MB (2001) Early development of the mandarin fish, *Synchiropus splendidus* (Callionymidae), with notes on its fishery and potential for culture. *Aquarium Sciences and Conservation* 3:253–263

Fig. S1 a and b Phylogeny of 102 teleost fishes from Lizard Island, Great Barrier Reef, their identity, mean (but see ESM methods for exceptions) standard length (SL) at settlement (bars), and family. The *dashed line* represents the predicted minimum standard length threshold (12 mm) where fish are expected to survive a gnathiid isopod encounter (see Results section for more details). *Error bars* are standard errors. The area of *filled black circles* represents the predicted SL of fish at settlement, relative to the ancestral SL using phylogenetically independent contrasts; for predicted lengths >35 mm we used *open circles* whose area was divided by 10





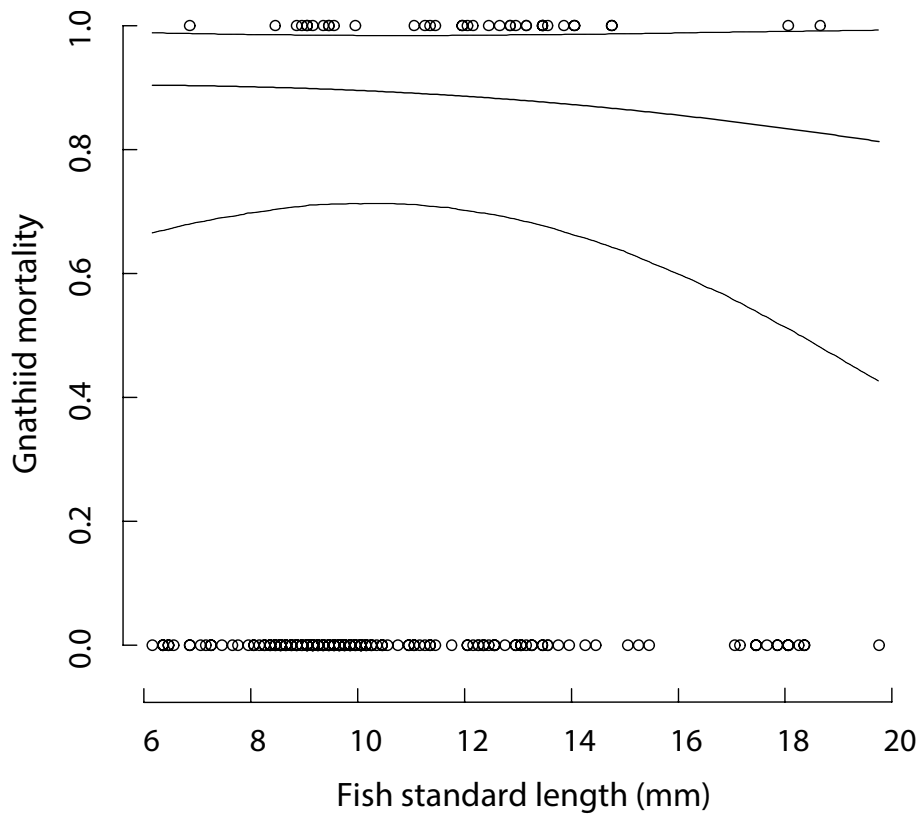


Fig. S2 Gnathiid mortality in relation to fish standard length; symbols represent dead (1) or alive (0) fish for fish exposed to a gnathiid isopod. Predicted values and 95% central posterior density interval are represented by *solid* and *dotted lines*, respectively

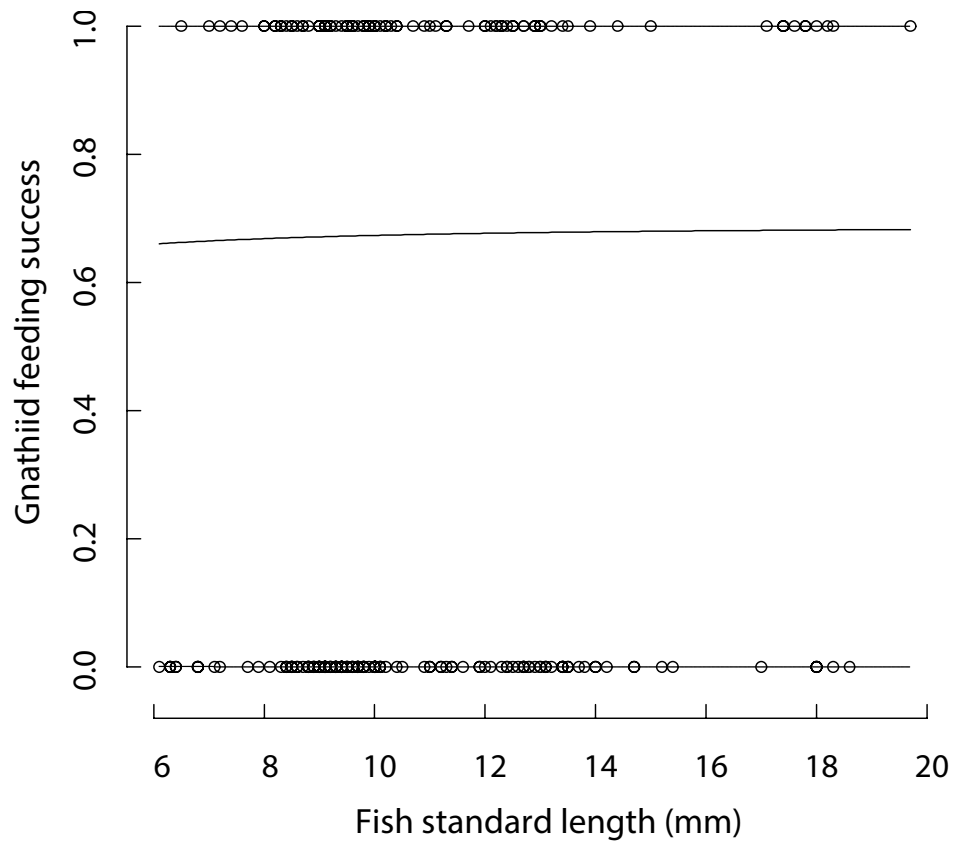


Fig. S3 Gnathiid feeding success in relation to fish standard length; symbols represent fed (1) or unfed (0) gnathiid isopod. Predicted values and 95% central posterior density interval are represented *solid* and *dotted lines*, respectively

Table S1 Information on fishes used for the analysis of fish size at settlement for 102 teleost fishes. Identity, sample size (n), data source, collection method and or location if other than a light trap at Lizard Island, Great Barrier Reef (GBR) (blank if obtained in the present study), and mean and standard error for standard length (SL). AIMS = Australian Institute of Marine Science.

Family	Family or genus and species	n	Source reference*	Fish collection method, location	Mean SL	Standard error SL
Acanthuridae	<i>Acanthurus</i> sp	2	Fisher et al. 2005		22.0	1.48
Acanthuridae	<i>Naso brevirostris</i>	2	Fisher et al. 2005		26.1	0.33
Apogonidae	<i>Apogon cyanosoma</i>	14	Fisher et al. 2005		10.9	0.41
Apogonidae	<i>Apogon doederleini</i>	5			10.6	0.21
Apogonidae	<i>Apogon exostigma</i>	4	Fisher et al. 2005		17.5	1.07
Apogonidae	<i>Apogon taeniophorus</i>	30			14.1	0.18
Apogonidae	<i>Apogon trifasciatus</i>	2	Leis et al. 1996		13.0	
Apogonidae	<i>Apogon trimaculatus</i>	35			13.7	0.12
Apogonidae	<i>Archamia</i> sp	8	AIMS		7.7	0.24
Apogonidae	<i>Cheilodopterus quinquelineatus</i>	4	Leis et al. 1996		10.5	
Apogonidae	<i>Fowleria</i> sp	4	Fisher et al. 2005		9.1	0.49
Apogonidae	<i>Nemia octospina</i>	3	Fisher et al. 2005		12.0	0.25
Balistidae	Balistidae sp	1	Fisher et al. 2005		19.9	
Blennidae	<i>Ecsenius stictus</i>	220	AIMS		13.5	0.04
Blennidae	<i>Petroscirtes lupus</i>	4	Fisher et al. 2005		16.4	1.31
Caesionidae	<i>Caesio cuning</i>	7	Fisher et al. 2005		18.0	1.48
Callionymidae	<i>Synchiropus splendidus</i>	NA	Sadovy et al. 2001	reared, Palau	2.9	
Carangidae	<i>Gnathanodon speciosus</i>	9	Fisher et al. 2005		24.3	0.82
Chaetodontidae	<i>Chaetodon aureofasciatus</i>	4	Fisher et al. 2005		13.8	2.46
Chaetodontidae	<i>Chaetodon auriga</i>	3	Fisher et al. 2005		17.4	1.39

Chaetodontidae	<i>Chaetodon lineolatus</i>	1	Leis et al. 1996		12.0	
Chaetodontidae	<i>Chaetodon melanotus</i>	1	Fisher et al. 2005		17.7	
Chaetodontidae	<i>Chaetodon plebeius</i>	11	Fisher et al. 2005		11.0	0.25
Chaetodontidae	<i>Chaetodon rainfordia</i>	9	Fisher et al. 2005		11.8	0.16
Chaetodontidae	<i>Chaetodon trifascialis</i>	1	Fisher et al. 2005		11.1	
Chaetodontidae	<i>Chelmon rostratus</i>	10	Stobutzki 1997		15.5	0.20
Clupeidae	<i>Spratelloides</i> sp	16	Fisher et al. 2005		25.2	1.64
Diotontidae	<i>Diodon hystrix</i>	NA	Leis 1978	NA	185.5	
Ephippidae	<i>Platax teira</i>	NA	Leis et al. 2007	NA	30.0	
Epinephalidae	<i>Cephalopholis</i> sp	2	Leis et al. 1996		16.3	
Gobiidae	<i>Amblygobius bynoensis</i>	NA	Hernaman 2003	Orpheus Is, GBR	8.3	
Gobiidae	<i>Amblygobius phalaena</i>	NA	Hernaman 2003	Orpheus Is, GBR	9.7	
Gobiidae	<i>Asterropteryx semipunctata</i>	NA	Hernaman 2003	Orpheus Is, GBR	6.2	
Gobiidae	<i>Istigobius goldmanni</i>	NA	Hernaman 2003	Orpheus Is, GBR	6.6	
Gobiidae	<i>Valenciennea muralis</i>	NA	Hernaman 2003	Orpheus Is, GBR	9.3	
Holocentridae	Holocentridae sp	1	Fisher et al. 2005		28.5	
Labridae	<i>Calotomos carolinus</i>	1	Bellwood & Choat 1989	reef	12.0	
Labridae	<i>Cheilinus</i> sp	1	AIMS		7.5	
Labridae	<i>Chlorurus sordidus</i>	1	Bellwood 1985	reef	7.8	
Labridae	<i>Coris schroederi</i>	NA	Green 1994	reef	8.0	
Labridae	<i>Halichoeres melanurus</i>	NA	Green 1994	reef	9.0	
Labridae	<i>Labroides dimidiatus</i>	2	Grutter 2000, unpub data	reef	9.4	0.41
Labridae	<i>Scarus frenatus</i>	1	Bellwood 1985	reef	7.7	
Lethrinidae	<i>Lethrinus atkinsoni</i>	21	Stobutzki 1997		18.4	0.22
Lethrinidae	<i>Lethrinus variegatus</i>	1	Leis et al. 1996		17.0	
Lethrinidae	<i>Letrinus genivittatus</i>	1	AIMS		16.5	
Lutjanidae	<i>Lutjanus carponotatus</i>	8	Fisher et al. 2005		23.9	0.16
Lutjanidae	<i>Lutjanus quinquelineatus</i>	7	Fisher et al. 2005		21.4	0.66
Monacanthidae	<i>Oxymonacanthus longirostris</i>	1	Fisher et al. 2005		19.1	
Monacanthidae	<i>Paramonacanthus</i> sp	13	Fisher et al. 2005		18.9	0.98
Monacanthidae	<i>Pseudomonacanthus peroni</i>	6	Fisher et al. 2005		22.6	0.98
Mullidae	<i>Parapeneus fasciatus</i>	1	AIMS		12.6	

Mullidae	<i>Upeneus tragula</i>	18	AIMS	30.4	0.72
Nemipteridae	<i>Scolopsis bilineatus</i>	30	AIMS	13.1	0.41
Nomeidae	<i>Psenes</i> sp	5	Fisher et al. 2005	16.4	1.15
Plesiopidae	Plesiopidae 5501	71	AIMS	10.1	0.01
Plesiopidae	Plesiopidae 5504	21	AIMS	9.2	0.21
Pomacanthidae	<i>Pomacanthus sextriatus</i>	13	Stobutzki 1997	13.0	0.16
Pomacentridae	<i>Abudefduf sexfasciatus</i>	100		13.2	0.36
Pomacentridae	<i>Abudefduf sordidus</i>	1	Leis et al. 1996	12.0	
Pomacentridae	<i>Abudefduf vaigiensis</i>	11	Fisher et al. 2005	14.3	0.49
Pomacentridae	<i>Acanthochromis polyacanthus</i>	8	Fisher et al. 2005	9.8	0.25
Pomacentridae	<i>Amblyglyphidodon curacao</i>	57	Leis et al. 2007	8.9	0.07
Pomacentridae	<i>Amblypomacentrus breviceps</i>	6	Fisher et al. 2005	10.3	0.25
Pomacentridae	<i>Amphiprion akindynos</i>	NA	Stobutzki 1998	6.8	
Pomacentridae	<i>Amphiprion clarkii</i>	1	Fisher et al. 2005	8.5	
Pomacentridae	<i>Chromis atripectoralis</i>	231	AIMS	8.2	0.04
Pomacentridae	<i>Chromis viridis</i>	30		8.0	0.09
Pomacentridae	<i>Chrysiptera cyanea</i>	NA	Stobutzki 1998	11.0	0.28
Pomacentridae	<i>Chrysiptera rex</i>	NA	Stobutzki 1998	12.7	0.61
Pomacentridae	<i>Chrysiptera rollandi</i>	187	AIMS	9.7	0.05
Pomacentridae	<i>Chrysiptera taupou</i>	NA	Stobutzki 1998	12.1	1.23
Pomacentridae	<i>Chrysiptera tricincta</i>	NA	Stobutzki 1998	7.2	0.40
Pomacentridae	<i>Dacyllus reticulatus</i>	2	Fisher et al. 2005	11.6	2.54
Pomacentridae	<i>Dascyllus aruanus</i>	75	AIMS	6.8	0.04
Pomacentridae	<i>Dischistodus prosopotaenia</i>	30		9.5	0.09
Pomacentridae	<i>Neoglyphidodon melas</i>	5		9.8	0.26
Pomacentridae	<i>Neoglyphidodon nigroris</i>	1	Fisher et al. 2005	9.8	
Pomacentridae	<i>Neopomacentrus azyron</i>	30		13.3	0.13
Pomacentridae	<i>Neopomacentrus cyanomos</i>	15	Fisher et al. 2005	13.4	0.16
Pomacentridae	<i>Pomacentrus adelus</i>	NA	Stobutzki 1998	11.6	0.27
Pomacentridae	<i>Pomacentrus amboinensis</i>	17	Stobutzki 1997	12.0	0.16
Pomacentridae	<i>Pomacentrus bankanensis</i>	NA	Stobutzki 1998	14.4	
Pomacentridae	<i>Pomacentrus brachialis</i>	9	Fisher et al. 2005	13.2	0.08

Pomacentridae	<i>Pomacentrus chrysurus</i>	16	Stobutzki 1997		13.3	0.12
Pomacentridae	<i>Pomacentrus coelestis</i>	337	AIMS		14.2	0.05
Pomacentridae	<i>Pomacentrus lepidogenys</i>	18	Fisher et al. 2005		13.9	0.33
Pomacentridae	<i>Pomacentrus moluccensis</i>	17	Stobutzki 1997		11.1	0.13
Pomacentridae	<i>Pomacentrus nagasakiensis</i>	14	Fisher et al. 2005		13.9	0.16
Pomacentridae	<i>Pristotis obtusirostris</i>	16	Fisher et al. 2005		23.2	0.74
Pseudochromidae	Pseudochromidae 5510	39	AIMS		12.5	0.16
Pseudochromidae	Pseudochromidae 5511	164	AIMS		13.0	0.08
Pseudochromidae	Pseudochromidae 5516	24	AIMS		12.8	0.13
Scorpaenidae	Scorpaenidae sp	NA	McCormick et al. 2002		9.0	
Serranidae	<i>Diploprion bifasciatum</i>	8	AIMS		24.0	
Serranidae	<i>Plectropomus leopardus</i>	12	Fisher et al. 2005		17.5	0.49
Siganidae	Siganidae sp 1	17			18.7	0.37
Siganidae	Siganidae sp 2	7			19.4	0.35
Sphyraenidae	Sphyraenidae spp	10			22.4	1.07
Terapontidae	<i>Terapon theraps</i>	6	Fisher et al. 2005		15.7	1.31
Tetraodontidae	<i>Canthigaster bennetti</i>	103	AIMS		24.2	0.31
Zanclidae	<i>Zanclus cornutus</i>	1	Doherty et al. 1995	reef, Moorea	61.5	

*References

- Bellwood DR (1985) The functional morphology, systematics, and behavioural ecology of parrotfishes (family Scaridae). Ph.D. thesis, James Cook University, Townsville, 487 pp
- Bellwood DR, Choat JH (1989) A description of the juvenile phase colour patterns of 24 parrotfish species (Family Scaridae) from the Great Barrier Reef, Australia. *Records of the Australian Museum* 41:1–41
- Doherty PJ, Dufour V, Planes S (1995) Reef Sites. *Coral Reefs* 14:26
- Fisher R, Leis JM, Clark DL, Wilson SK (2005) Critical swimming speeds of late-stage coral reef fish larvae: variation within species, among species and between locations. *Mar Biol* 147:1201–1212
- Green AL (1994) The early life history of labroid fishes at Lizard Island, Northern Great Barrier Reef. Ph.D. thesis, James Cook University, Townsville
- Gutter AS (2000) Ontogenetic variation in the diet of the cleaner fish *Labroides dimidiatus* and its ecological consequences. *Mar Ecol Prog Ser* 197:241–246

- Hernaman V (2003) A comparative analysis of the life history and ecology of five species of coral reef goby. Ph.D. thesis, University of Otago, Dunedin
- Leis JM (1978) Systematics and zoogeography of porcupinefishes (*Diodon*, Diodontidae, Tetraodontiformes), with comments on egg and larval development. *Fish Bull* 76:535–567
- Leis JM, Sweatman HPA, Reader SE (1996) What the pelagic stages of coral reef fishes are doing out in blue water: daytime field observations of larval behavioural capabilities. *Mar Freshw Res* 47:401–411
- Leis JM, Hay AC, Lockett MM, Chen JP, Fang LS (2007) Ontogeny of swimming speed in larvae of pelagic-spawning, tropical, marine fishes. *Mar Ecol Prog Ser* 349:255–267
- McCormick MI, Makey L, Dufour V (2002) Comparative study of metamorphosis in tropical reef fishes. *Mar Biol* 141:841–853
- Sadovy Y, Mitcheson G, Rasotto MB (2001) Early development of the mandarin fish, *Synchiropus splendidus* (Callionymidae), with notes on its fishery and potential for culture. *Aquarium Sciences and Conservation* 3:253–263
- Stobutzki IC (1997) Energetic cost of sustained swimming in the late pelagic stages of reef fishes. *Mar Ecol Prog Ser* 152:249–259
- Stobutzki IC (1998) Interspecific variation in sustained swimming ability of late pelagic stage reef fish from two families (Pomacentridae and Chaetodontidae). *Coral Reefs* 17:111–119

Table S2 Fish species found at Lizard Island, Great Barrier Reef

a) Species recorded at Lizard Island, and used to calculate the percent sampled for their standard length at settlement per family in Fig. 5 (total n species listed here = 761). List obtained using species records, see ESM methods

Species	Family
<i>Acanthurus albipectoralis</i>	Acanthuridae
<i>Acanthurus auranticavus</i>	Acanthuridae
<i>Acanthurus blochii</i>	Acanthuridae
<i>Acanthurus dussumieri</i>	Acanthuridae
<i>Acanthurus grammoptilus</i>	Acanthuridae
<i>acanthurus leucocheilus</i>	Acanthuridae
<i>Acanthurus lineatus</i>	Acanthuridae
<i>Acanthurus mata</i>	Acanthuridae
<i>Acanthurus nigricans</i>	Acanthuridae
<i>Acanthurus nigricauda</i>	Acanthuridae
<i>Acanthurus nigrofuscus</i>	Acanthuridae
<i>Acanthurus olivaceus</i>	Acanthuridae
<i>Acanthurus pyroferus</i>	Acanthuridae
<i>Acanthurus triostegus</i>	Acanthuridae
<i>Acanthurus xanthopterus</i>	Acanthuridae
<i>Ctenochaetus binotatus</i>	Acanthuridae
<i>Ctenochaetus striatus</i>	Acanthuridae
<i>Naso annulatus</i>	Acanthuridae
<i>Naso brevirostris</i>	Acanthuridae
<i>Naso hexacanthus</i>	Acanthuridae
<i>Naso lituratus</i>	Acanthuridae

<i>Naso tonganus</i>	Acanthuridae
<i>Naso tuberosus</i>	Acanthuridae
<i>Naso unicornis</i>	Acanthuridae
<i>Naso vlamingii</i>	Acanthuridae
<i>Paracanthurus hepatus</i>	Acanthuridae
<i>Zebrasoma scopas</i>	Acanthuridae
<i>Zebrasoma veliferum</i>	Acanthuridae
<i>Apogon angustatus</i>	Apogonidae
<i>Apogon aureus</i>	Apogonidae
<i>Apogon ceramensis</i>	Apogonidae
<i>Apogon cladophilos</i>	Apogonidae
<i>Apogon compressus</i>	Apogonidae
<i>Apogon cookii</i>	Apogonidae
<i>Apogon crassiceps</i>	Apogonidae
<i>Apogon cyanosoma</i>	Apogonidae
<i>Apogon darnleyensis</i>	Apogonidae
<i>Apogon doederleini</i>	Apogonidae
<i>Apogon doryssa</i>	Apogonidae
<i>Apogon endekataenia</i>	Apogonidae
<i>Apogon exostigma</i>	Apogonidae
<i>Apogon fraenatus</i>	Apogonidae
<i>Apogon guamensis</i>	Apogonidae
<i>Apogon hoevenii</i>	Apogonidae
<i>Apogon kinesis</i>	Apogonidae
<i>Apogon melas</i>	Apogonidae
<i>Apogon neotes</i>	Apogonidae
<i>Apogon nigrofasciatus</i>	Apogonidae
<i>Apogon novemfasciatus</i>	Apogonidae

<i>Apogon properuptus</i>	Apogonidae
<i>Apogon rubrimacula</i>	Apogonidae
<i>Apogon sangiensis</i>	Apogonidae
<i>Apogon semiornatus</i>	Apogonidae
<i>Apogon taeniophorus</i>	Apogonidae
<i>Apogon trifasciatus</i>	Apogonidae
<i>Apogon trimaculatus</i>	Apogonidae
<i>Apogonichthys ocellatus</i>	Apogonidae
<i>Archamia bleekeri</i>	Apogonidae
<i>Archamia fucata</i>	Apogonidae
<i>Archamia leai</i>	Apogonidae
<i>Archamia melasma</i>	Apogonidae
<i>Archamia zosterophora</i>	Apogonidae
<i>Cercamia eremia</i>	Apogonidae
<i>Cheilodipterus artus</i>	Apogonidae
<i>Cheilodipterus intermedius</i>	Apogonidae
<i>Cheilodipterus isostigma</i>	Apogonidae
<i>Cheilodipterus macrodon</i>	Apogonidae
<i>Cheilodipterus parazonatus</i>	Apogonidae
<i>Cheilodipterus quinquelineatus</i>	Apogonidae
<i>Foa brachygramma</i>	Apogonidae
<i>Fowleria aurita</i>	Apogonidae
<i>Fowleria isostigma</i>	Apogonidae
<i>Fowleria vaiulae</i>	Apogonidae
<i>Fowleria variegata</i>	Apogonidae
<i>Gymnapogon urospilotus</i>	Apogonidae
<i>Neamia octospina</i>	Apogonidae
<i>Nectamia savayensis</i>	Apogonidae

<i>Ostorhinchus aroubiensis</i>	Apogonidae
<i>Pristiapogon kallopterus</i>	Apogonidae
<i>Pseudamia gelatinosa</i>	Apogonidae
<i>Rhabdamia cypselurus</i>	Apogonidae
<i>Rhabdamia gracilis</i>	Apogonidae
<i>Siphamia tubifer</i>	Apogonidae
<i>Sphaeramia nematoptera</i>	Apogonidae
<i>Zoramia leptacanthus</i>	Apogonidae
<i>Zoramia viridiventer</i>	Apogonidae
<i>Abalistes stellatus</i>	Balistidae
<i>Balistapus undulatus</i>	Balistidae
<i>Balistoides viridescens</i>	Balistidae
<i>Canthidermis maculatus</i>	Balistidae
<i>Odonus niger</i>	Balistidae
<i>Pseudobalistes flavimarginatus</i>	Balistidae
<i>Pseudobalistes fuscus</i>	Balistidae
<i>Rhinecanthus aculeatus</i>	Balistidae
<i>Rhinecanthus verrucosus</i>	Balistidae
<i>Sufflamen chrysopterus</i>	Balistidae
<i>Sufflamen fraenatus</i>	Balistidae
<i>Aspidontus dussumieri</i>	Blenniidae
<i>Aspidontus taeniatus</i>	Blenniidae
<i>Atrosalarias fuscus</i>	Blenniidae
<i>Blenniella paula</i>	Blenniidae
<i>Cirripectes castaneus</i>	Blenniidae
<i>Cirripectes chelomatus</i>	Blenniidae
<i>Cirripectes filamentosus</i>	Blenniidae
<i>Cirripectes polyzona</i>	Blenniidae

<i>Cirripectes quagga</i>	Blenniidae
<i>Cirripectes stigmaticus</i>	Blenniidae
<i>Crossosalarias macrospilus</i>	Blenniidae
<i>Ecsenius aequalis</i>	Blenniidae
<i>Ecsenius bicolor</i>	Blenniidae
<i>Ecsenius mandibularis</i>	Blenniidae
<i>Ecsenius stictus</i>	Blenniidae
<i>Ecsenius yaeyamaensis</i>	Blenniidae
<i>Enchelyurus kraussi</i>	Blenniidae
<i>Entomacrodus decussatus</i>	Blenniidae
<i>Exallias brevis</i>	Blenniidae
<i>Glyptoparus delicatulus</i>	Blenniidae
<i>Istiblennius dussumieri</i>	Blenniidae
<i>Istiblennius edentulous</i>	Blenniidae
<i>Istiblennius lineatus</i>	Blenniidae
<i>Istiblennius meleagris</i>	Blenniidae
<i>Meiacanthus atrodorsalis</i>	Blenniidae
<i>Meiacanthus ditrema</i>	Blenniidae
<i>Meiacanthus grammistes</i>	Blenniidae
<i>Meiacanthus lineatus</i>	Blenniidae
<i>Nannosalarias nativitatus</i>	Blenniidae
<i>Omobranchus germaini</i>	Blenniidae
<i>Omux biporos</i>	Blenniidae
<i>Petroscirtes fallax</i>	Blenniidae
<i>Petroscirtes lupus</i>	Blenniidae
<i>Petroscirtes mitratus</i>	Blenniidae
<i>Petroscirtes xestus</i>	Blenniidae
<i>Plagiotremus laudandus</i>	Blenniidae

<i>Plagiotremus rhinorhynchos</i>	Blenniidae
<i>Plagiotremus tapeinosoma</i>	Blenniidae
<i>Salarias alboguttatus</i>	Blenniidae
<i>Salarias ceramensis</i>	Blenniidae
<i>Salarias fasciatus</i>	Blenniidae
<i>Salarias guttatus</i>	Blenniidae
<i>Salarias patzneri</i>	Blenniidae
<i>Salarias sinuosus</i>	Blenniidae
<i>Stanulus seychellensis</i>	Blenniidae
<i>Xiphasia setifer</i>	Blenniidae
<i>Callionymus belcheri belcheri</i>	Callionymidae
<i>Callionymus enneactis</i>	Callionymidae
<i>Callionymus simplicicornis</i>	Callionymidae
<i>Calliurichthys grossi</i>	Callionymidae
<i>Diplogrammus goramensis</i>	Callionymidae
<i>Minysynchiropus claudiae</i>	Callionymidae
<i>Neosynchiropus ocellatus</i>	Callionymidae
<i>Pseudocalliurichthys pleurostictus</i>	Callionymidae
<i>Alectis</i>	Carangidae
<i>Alepes</i>	Carangidae
<i>Atule mate</i>	Carangidae
<i>Carangoides emburyi</i>	Carangidae
<i>Carangoides ferdau</i>	Carangidae
<i>Carangoides fulvoguttatus</i>	Carangidae
<i>Carangoides gymnostethus</i>	Carangidae
<i>Carangoides orthogrammus</i>	Carangidae
<i>Carangoides plagiotaenia</i>	Carangidae
<i>Caranx ignobilis</i>	Carangidae

<i>Caranx melampygus</i>	Carangidae
<i>Caranx papuensis</i>	Carangidae
<i>Caranx sexfasciatus</i>	Carangidae
<i>Elagatis bipinnulata</i>	Carangidae
<i>Gnathanodon speciosus</i>	Carangidae
<i>Scomberoides lysan</i>	Carangidae
<i>Selar crumenophthalmus</i>	Carangidae
<i>Trachinotus baillonii</i>	Carangidae
<i>Trachinotus blochii</i>	Carangidae
<i>Chaetodon aureofasciatus</i>	Chaetodontidae
<i>Chaetodon auriga</i>	Chaetodontidae
<i>Chaetodon baronessa</i>	Chaetodontidae
<i>Chaetodon bennetti</i>	Chaetodontidae
<i>Chaetodon citrinellus</i>	Chaetodontidae
<i>Chaetodon ephippium</i>	Chaetodontidae
<i>Chaetodon flavirostris</i>	Chaetodontidae
<i>Chaetodon kleinii</i>	Chaetodontidae
<i>Chaetodon lineolatus</i>	Chaetodontidae
<i>Chaetodon lunula</i>	Chaetodontidae
<i>Chaetodon melannotus</i>	Chaetodontidae
<i>Chaetodon mertensii</i>	Chaetodontidae
<i>Chaetodon oxycephalus</i>	Chaetodontidae
<i>Chaetodon pelewensis</i>	Chaetodontidae
<i>Chaetodon plebeius</i>	Chaetodontidae
<i>Chaetodon punctatofasciatus</i>	Chaetodontidae
<i>Chaetodon rafflesia</i>	Chaetodontidae
<i>Chaetodon rainfordi</i>	Chaetodontidae
<i>Chaetodon semeion</i>	Chaetodontidae

<i>Chaetodon speculum</i>	Chaetodontidae
<i>Chaetodon trifascialis</i>	Chaetodontidae
<i>Chaetodon trifasciatus</i>	Chaetodontidae
<i>Chaetodon ulietensis</i>	Chaetodontidae
<i>Chaetodon unimaculatus</i>	Chaetodontidae
<i>Chaetodon vagabundus</i>	Chaetodontidae
<i>Chelmon rostratus</i>	Chaetodontidae
<i>Heniochus acuminatus</i>	Chaetodontidae
<i>Heniochus chrysostomus</i>	Chaetodontidae
<i>Heniochus monoceros</i>	Chaetodontidae
<i>Heniochus singularius</i>	Chaetodontidae
<i>Heniochus varius</i>	Chaetodontidae
<i>Amblygaster sirm</i>	Clupeidae
<i>Dussumieria elopsoides</i>	Clupeidae
<i>Herklotsichthys lippa</i>	Clupeidae
<i>Herklotsichthys quadrimaculatus</i>	Clupeidae
<i>Spratelloides delicatulus</i>	Clupeidae
<i>Spratelloides gracilis</i>	Clupeidae
<i>Diodon hystrix</i>	Diodontidae
<i>Diodon liturosus</i>	Diodontidae
<i>Epinephelus lanceolatus</i>	Epinephelidae
<i>Platax orbicularis</i>	Ephippidae
<i>Platax pinnatus</i>	Ephippidae
<i>Platax teira</i>	Ephippidae
<i>Acentrogobius janthinopterus</i>	Gobiidae
<i>Amblyeleotris callopareia</i>	Gobiidae
<i>Amblyeleotris diagonalis</i>	Gobiidae
<i>Amblyeleotris guttata</i>	Gobiidae

<i>Amblyeleotris macronema</i>	Gobiidae
<i>Amblyeleotris ogasawarensis</i>	Gobiidae
<i>Amblyeleotris rubrimarginata</i>	Gobiidae
<i>Amblyeleotris steinitzi</i>	Gobiidae
<i>Amblyeleotris wheeleri</i>	Gobiidae
<i>Amblygobius bynoensis</i>	Gobiidae
<i>Amblygobius decussatus</i>	Gobiidae
<i>Amblygobius nocturnus</i>	Gobiidae
<i>Amblygobius phalaena</i>	Gobiidae
<i>Amblygobius rainfordi</i>	Gobiidae
<i>Amblygobius sphynx</i>	Gobiidae
<i>Asterropteryx semipunctatus</i>	Gobiidae
<i>Asterropteryx spinosa</i>	Gobiidae
<i>Barbuligobius boehlkei</i>	Gobiidae
<i>Bathygobius coalitus</i>	Gobiidae
<i>Bathygobius cocosensis</i>	Gobiidae
<i>Bathygobius fuscus</i>	Gobiidae
<i>Bryaninops amplus</i>	Gobiidae
<i>Bryaninops erythrops</i>	Gobiidae
<i>Bryaninops isis</i>	Gobiidae
<i>Bryaninops loki</i>	Gobiidae
<i>Bryaninops natans</i>	Gobiidae
<i>Bryaninops ridens</i>	Gobiidae
<i>Bryaninops tigris</i>	Gobiidae
<i>Bryaninops yongei</i>	Gobiidae
<i>Cabillus tongarevae</i>	Gobiidae
<i>Callogobius hasselti</i>	Gobiidae
<i>Callogobius okinawae</i>	Gobiidae

<i>Callogobius sclateri</i>	Gobiidae
<i>Coryphopterus neophytus</i>	Gobiidae
<i>Cryptocentrus caeruleomaculatus</i>	Gobiidae
<i>Cryptocentrus cinctus</i>	Gobiidae
<i>Cryptocentrus fasciatus</i>	Gobiidae
<i>Cryptocentrus leptcephalus</i>	Gobiidae
<i>Cryptocentrus leucostictus</i>	Gobiidae
<i>Cryptocentrus maudae</i>	Gobiidae
<i>Cryptocentrus strigilliceus</i>	Gobiidae
<i>Ctenogobiops aurocingulus</i>	Gobiidae
<i>Ctenogobiops crocineus</i>	Gobiidae
<i>Ctenogobiops feroculus</i>	Gobiidae
<i>Ctenogobiops pomastictus</i>	Gobiidae
<i>Ctenogobiops tongaensis</i>	Gobiidae
<i>Drombus</i>	Gobiidae
<i>Eviota afelei</i>	Gobiidae
<i>Eviota albolineata</i>	Gobiidae
<i>Eviota bifasciata</i>	Gobiidae
<i>Eviota cometa</i>	Gobiidae
<i>Eviota distigma</i>	Gobiidae
<i>Eviota fasciola</i>	Gobiidae
<i>Eviota herrei</i>	Gobiidae
<i>Eviota infulata</i>	Gobiidae
<i>Eviota melasma</i>	Gobiidae
<i>Eviota monostigma</i>	Gobiidae
<i>Eviota nebulosa</i>	Gobiidae
<i>Eviota nigriventris</i>	Gobiidae
<i>Eviota pellucida</i>	Gobiidae

<i>Eviota prasites</i>	Gobiidae
<i>Eviota punctulata</i>	Gobiidae
<i>Eviota queenslandica</i>	Gobiidae
<i>Eviota sigillata</i>	Gobiidae
<i>Eviota sparsa</i>	Gobiidae
<i>Eviota variole</i>	Gobiidae
<i>Eviota zebrine</i>	Gobiidae
<i>Exyrias belissimus</i>	Gobiidae
<i>Exyrias puntang</i>	Gobiidae
<i>Favonigobius lateralis</i>	Gobiidae
<i>Feia nympha</i>	Gobiidae
<i>Fusigobius duospilus</i>	Gobiidae
<i>Fusigobius neophytus</i>	Gobiidae
<i>Fusigobius signipinnis</i>	Gobiidae
<i>Gnatholepis anjerensis</i>	Gobiidae
<i>Gobiodon acicularis</i>	Gobiidae
<i>Gobiodon albofasciatus</i>	Gobiidae
<i>Gobiodon axillaris</i>	Gobiidae
<i>Gobiodon brochus</i>	Gobiidae
<i>Gobiodon ceramensis</i>	Gobiidae
<i>Gobiodon citrinus</i>	Gobiidae
<i>Gobiodon fulvus</i>	Gobiidae
<i>Gobiodon heterospilos</i>	Gobiidae
<i>Gobiodon histrio</i>	Gobiidae
<i>Gobiodon oculolineatus</i>	Gobiidae
<i>Gobiodon okinawae</i>	Gobiidae
<i>Gobiodon quinquestrigatus</i>	Gobiidae
<i>Gobiodon rivulatus</i>	Gobiidae

<i>Gobiodon unicolor</i>	Gobiidae
<i>Gobiopsis angustifrons</i>	Gobiidae
<i>Gobiopsis aporia</i>	Gobiidae
<i>Istigobius decoratus</i>	Gobiidae
<i>Istigobius goldmanni</i>	Gobiidae
<i>Istigobius ornatus</i>	Gobiidae
<i>Istigobius rigilius</i>	Gobiidae
<i>Lophogobius bleekeri</i>	Gobiidae
<i>Lotilia klausewitzii</i>	Gobiidae
<i>Lubricogobius ornatus</i>	Gobiidae
<i>Luposicya lupus</i>	Gobiidae
<i>Macrodontogobius wilburi</i>	Gobiidae
<i>Mahidolia mystacina</i>	Gobiidae
<i>Mugilogobius mertonii</i>	Gobiidae
<i>Oplopomus oplopomus</i>	Gobiidae
<i>Paragobiodon echinocephalus</i>	Gobiidae
<i>Paragobiodon lacunicolus</i>	Gobiidae
<i>Paragobiodon melanosoma</i>	Gobiidae
<i>Paragobiodon modestus</i>	Gobiidae
<i>Paragobiodon xanthosoma</i>	Gobiidae
<i>Pleurosicya boldinghi</i>	Gobiidae
<i>Pleurosicya coerulea</i>	Gobiidae
<i>Pleurosicya fringilla</i>	Gobiidae
<i>Pleurosicya mossambica</i>	Gobiidae
<i>Pleurosicya muscarum</i>	Gobiidae
<i>Priolepis cincta</i>	Gobiidae
<i>Priolepis fallacincta</i>	Gobiidae
<i>Priolepis inhaca</i>	Gobiidae

<i>Priolepis kappa</i>	Gobiidae
<i>Priolepis nuchifasciata</i>	Gobiidae
<i>Psilogobius</i>	Gobiidae
<i>Redigobius balteatus</i>	Gobiidae
<i>Signigobius biocellatus</i>	Gobiidae
<i>Trimma benjamini</i>	Gobiidae
<i>Trimma caesiura</i>	Gobiidae
<i>Trimma fangi</i>	Gobiidae
<i>Trimma lantana</i>	Gobiidae
<i>Trimma macrophthalma</i>	Gobiidae
<i>Trimma necopina</i>	Gobiidae
<i>Trimma okinawae</i>	Gobiidae
<i>Trimma striata</i>	Gobiidae
<i>Trimma tevegae</i>	Gobiidae
<i>Trimmatom zapotes</i>	Gobiidae
<i>Valenciennesa helsdingenii</i>	Gobiidae
<i>Valenciennesa longipinnis</i>	Gobiidae
<i>Valenciennesa muralis</i>	Gobiidae
<i>Valenciennesa parva</i>	Gobiidae
<i>Valenciennesa puellaris</i>	Gobiidae
<i>Valenciennesa randalli</i>	Gobiidae
<i>Valenciennesa sexguttata</i>	Gobiidae
<i>Valenciennesa strigata</i>	Gobiidae
<i>Vanderhorstia ambanoro</i>	Gobiidae
<i>Vanderhorstia mertensi</i>	Gobiidae
<i>Vanderhorstia ornatissima</i>	Gobiidae
<i>Yongeichthys nebulosus</i>	Gobiidae
<i>Myripristis berndti</i>	Holocentridae

<i>Myripristis hexagonus</i>	Holocentridae
<i>Myripristis kuntee</i>	Holocentridae
<i>Myripristis murdjan</i>	Holocentridae
<i>Myripristis pralinia</i>	Holocentridae
<i>Myripristis violacea</i>	Holocentridae
<i>Neoniphon argenteus</i>	Holocentridae
<i>Neoniphon opercularis</i>	Holocentridae
<i>Neoniphon sammara</i>	Holocentridae
<i>Sargocentron caudimaculatum</i>	Holocentridae
<i>Sargocentron cornutum</i>	Holocentridae
<i>Sargocentron diadema</i>	Holocentridae
<i>Sargocentron microstoma</i>	Holocentridae
<i>Sargocentron praslin</i>	Holocentridae
<i>Sargocentron rubrum</i>	Holocentridae
<i>Sargocentron spiniferum</i>	Holocentridae
<i>Sargocentron tiereoides</i>	Holocentridae
<i>Sargocentron violaceum</i>	Holocentridae
<i>Anampses caeruleopunctatus</i>	Labridae
<i>Anampses geographicus</i>	Labridae
<i>Anampses meleagrides</i>	Labridae
<i>Anampses neoguinaicus</i>	Labridae
<i>Bodianus axillaris</i>	Labridae
<i>Bodianus diana</i>	Labridae
<i>Bodianus loxozonus</i>	Labridae
<i>Bodianus mesothorax</i>	Labridae
<i>Bolbometopon muricatum</i>	Labridae
<i>Calotomus carolinus</i>	Labridae
<i>Cetoscarus bicolor</i>	Labridae

<i>Cheilinus chlorourus</i>	Labridae
<i>Cheilinus fasciatus</i>	Labridae
<i>Cheilinus oxycephalus</i>	Labridae
<i>Cheilinus trilobatus</i>	Labridae
<i>Cheilinus undulatus</i>	Labridae
<i>Cheilio inermis</i>	Labridae
<i>Chlorurus bleekeri</i>	Labridae
<i>Chlorurus japanensis</i>	Labridae
<i>Chlorurus microrhinos</i>	Labridae
<i>Choerodon anchorago</i>	Labridae
<i>Choerodon fasciatus</i>	Labridae
<i>Choerodon schoenleinii</i>	Labridae
<i>Choerodon sugillatum</i>	Labridae
<i>Choerodon venustus</i>	Labridae
<i>Cirrhilabrus punctatus</i>	Labridae
<i>Cirrhilabrus temminckii</i>	Labridae
<i>Coris aygula</i>	Labridae
<i>Coris batuensis</i>	Labridae
<i>Coris dorsomacula</i>	Labridae
<i>Coris gaimard</i>	Labridae
<i>Coris variegata</i>	Labridae
<i>Cymolutes torquatus</i>	Labridae
<i>Epibulus insidiator</i>	Labridae
<i>Gomphosus varius</i>	Labridae
<i>Halichoeres biocellatus</i>	Labridae
<i>Halichoeres chloropterus</i>	Labridae
<i>Halichoeres hartzfeldi</i>	Labridae
<i>Halichoeres hortulanus</i>	Labridae

<i>Halichoeres margaritaceus</i>	Labridae
<i>Halichoeres marginatus</i>	Labridae
<i>Halichoeres melanurus</i>	Labridae
<i>Halichoeres miniatus</i>	Labridae
<i>Halichoeres nebulosa</i>	Labridae
<i>Halichoeres ornatissimus</i>	Labridae
<i>Halichoeres prosopion</i>	Labridae
<i>Halichoeres scapularis</i>	Labridae
<i>Halichoeres trimaculatus</i>	Labridae
<i>Hemigymnus fasciatus</i>	Labridae
<i>Hemigymnus melapterus</i>	Labridae
<i>Hipposcarus longiceps</i>	Labridae
<i>Hologymnosus annulatus</i>	Labridae
<i>Hologymnosus doliatus</i>	Labridae
<i>Labrichthys unilineatus</i>	Labridae
<i>Labroides bicolor</i>	Labridae
<i>Labroides dimidiatus</i>	Labridae
<i>Labropsis australis</i>	Labridae
<i>Macropharyngodon meleagris</i>	Labridae
<i>Macropharyngodon negrosensis</i>	Labridae
<i>Novaculichthys taeniourus</i>	Labridae
<i>Oxycheilinus bimaculatus</i>	Labridae
<i>Oxycheilinus digramma</i>	Labridae
<i>Oxycheilinus unifasciatus</i>	Labridae
<i>Pseudocheilinus evanidus</i>	Labridae
<i>Pseudocheilinus hexataenia</i>	Labridae
<i>Pteragogus cryptus</i>	Labridae
<i>Scarus altipinnis</i>	Labridae

<i>Scarus chameleon</i>	Labridae
<i>Scarus dimidiatus</i>	Labridae
<i>Scarus flavipectoralis</i>	Labridae
<i>Scarus forsteni</i>	Labridae
<i>Scarus frenatus</i>	Labridae
<i>Scarus ghobban</i>	Labridae
<i>Scarus globiceps</i>	Labridae
<i>Scarus longipinnis</i>	Labridae
<i>Scarus niger</i>	Labridae
<i>Scarus oviceps</i>	Labridae
<i>Scarus psittacus</i>	Labridae
<i>Scarus quoyi</i>	Labridae
<i>Scarus rivulatus</i>	Labridae
<i>Scarus rubroviolaceus</i>	Labridae
<i>Scarus schlegeli</i>	Labridae
<i>Cholrurus sordidus</i>	Labridae
<i>Scarus spinus</i>	Labridae
<i>Scarus tricolor</i>	Labridae
<i>Stethojulis bandanensis</i>	Labridae
<i>Stethojulis interrupta</i>	Labridae
<i>Stethojulis strigiventer</i>	Labridae
<i>Stethojulis trilineata</i>	Labridae
<i>Thalassoma amblycephalus</i>	Labridae
<i>Thalassoma hardwickei</i>	Labridae
<i>Thalassoma janseni</i>	Labridae
<i>Thalassoma lunare</i>	Labridae
<i>Thalassoma lutescens</i>	Labridae
<i>Wetmorella albofasciata</i>	Labridae

<i>Gnathodentex aureolineatus</i>	Lethrinidae
<i>Gymnocranius euanus</i>	Lethrinidae
<i>Gymnocranius grandoculis</i>	Lethrinidae
<i>Lethrinus atkinsoni</i>	Lethrinidae
<i>Lethrinus erythracanthus</i>	Lethrinidae
<i>Lethrinus genivittatus</i>	Lethrinidae
<i>Lethrinus harak</i>	Lethrinidae
<i>Lethrinus laticaudis</i>	Lethrinidae
<i>Lethrinus lentjan</i>	Lethrinidae
<i>Lethrinus miniatus</i>	Lethrinidae
<i>Lethrinus nebulosus</i>	Lethrinidae
<i>Lethrinus obsoletus</i>	Lethrinidae
<i>Lethrinus olivaceus</i>	Lethrinidae
<i>Lethrinus ornatus</i>	Lethrinidae
<i>Lethrinus ravus</i>	Lethrinidae
<i>Lethrinus rubrioperculatus</i>	Lethrinidae
<i>Lethrinus semicinctus</i>	Lethrinidae
<i>Lethrinus variegatus</i>	Lethrinidae
<i>Lethrinus xanthochilus</i>	Lethrinidae
<i>Monotaxis grandoculis</i>	Lethrinidae
<i>Aprion virescens</i>	Lutjanidae
<i>Caesio caeruleaurea</i>	Caesionidae
<i>Caesio cuning</i>	Caesionidae
<i>Caesio teres</i>	Caesionidae
<i>Caesio xanthonota</i>	Caesionidae
<i>Caesio xanthurus</i>	Caesionidae
<i>Dipterygonotus balteatus</i>	Lutjanidae
<i>Lutjanus adetii</i>	Lutjanidae

<i>Lutjanus argentimaculatus</i>	Lutjanidae
<i>Lutjanus biguttatus</i>	Lutjanidae
<i>Lutjanus bohar</i>	Lutjanidae
<i>Lutjanus carponotatus</i>	Lutjanidae
<i>Lutjanus ehrenbergi</i>	Lutjanidae
<i>Lutjanus erythropterus</i>	Lutjanidae
<i>Lutjanus fulviflamma</i>	Lutjanidae
<i>Lutjanus fulvus</i>	Lutjanidae
<i>Lutjanus gibbus</i>	Lutjanidae
<i>Lutjanus kasmira</i>	Lutjanidae
<i>Lutjanus lemniscatus</i>	Lutjanidae
<i>Lutjanus lutjanus</i>	Lutjanidae
<i>Lutjanus malabaricus</i>	Lutjanidae
<i>Lutjanus monostigma</i>	Lutjanidae
<i>Lutjanus quinquelineatus</i>	Lutjanidae
<i>Lutjanus russellii</i>	Lutjanidae
<i>Lutjanus sebae</i>	Lutjanidae
<i>Lutjanus vitta</i>	Lutjanidae
<i>Macolor niger</i>	Lutjanidae
<i>Pterocaesio chrysozona</i>	Lutjanidae
<i>Pterocaesio digramma</i>	Lutjanidae
<i>Pterocaesio tile</i>	Lutjanidae
<i>Pterocaesio trilineata</i>	Lutjanidae
<i>Symphorichthys spilurus</i>	Lutjanidae
<i>Symphorus nematophorus</i>	Lutjanidae
<i>Acreichthys radiatus</i>	Monacanthidae
<i>Aluterus scripta</i>	Monacanthidae
<i>Brachaluteres taylori</i>	Monacanthidae

<i>Cantherines pardalis</i>	Monacanthidae
<i>Oxymonacanthus longirostris</i>	Monacanthidae
<i>Paraluteres prionurus</i>	Monacanthidae
<i>Paramonacanthus filicauda</i>	Monacanthidae
<i>Paramonacanthus japonicas</i>	Monacanthidae
<i>Paramonacanthus lowei</i>	Monacanthidae
<i>Paramonacanthus otisensis</i>	Monacanthidae
<i>Pervagor janthinosoma</i>	Monacanthidae
<i>Pervagor melanocephalus</i>	Monacanthidae
<i>Pseudalutarius nasicornis</i>	Monacanthidae
<i>Pseudomonacanthus peroni</i>	Monacanthidae
<i>Rudarius minutus</i>	Monacanthidae
<i>Mulloidichthys flavolineatus</i>	Mullidae
<i>Mulloidichthys vanicolensis</i>	Mullidae
<i>Parupeneus barberinus</i>	Mullidae
<i>Parupeneus bifasciatus</i>	Mullidae
<i>Parupeneus ciliates</i>	Mullidae
<i>Parupeneus cyclostomus</i>	Mullidae
<i>Parupeneus heptacanthus</i>	Mullidae
<i>Parupeneus indicus</i>	Mullidae
<i>Parupeneus multifasciatus</i>	Mullidae
<i>Parupeneus pleurostigma</i>	Mullidae
<i>Parupeneus spilurus</i>	Mullidae
<i>Parupeneus trifasciatus</i>	Mullidae
<i>Upeneus tragula</i>	Mullidae
<i>Pentapodus aureofasciatus</i>	Nemipteridae
<i>Scolopsis affinis</i>	Nemipteridae
<i>Scolopsis bilineata</i>	Nemipteridae

<i>Scolopsis lineata</i>	Nemipteridae
<i>Scolopsis margaritifera</i>	Nemipteridae
<i>Scolopsis monogramma</i>	Nemipteridae
<i>Scolopsis temporalis</i>	Nemipteridae
<i>Scolopsis trilineata</i>	Nemipteridae
<i>Psenes arafurensis</i>	Nomeidae
<i>Psenes cyanophrys</i>	Nomeidae
<i>Assessor flavissimus</i>	Plesiopidae
<i>Assessor macneilli</i>	Plesiopidae
<i>Belonepterygion fasciolatum</i>	Plesiopidae
<i>Notograptus guttatus</i>	Plesiopidae
<i>Plesiops coeruleolineatus</i>	Plesiopidae
<i>Plesiops genaricus</i>	Plesiopidae
<i>Plesiops verecundus</i>	Plesiopidae
<i>Centropyge bicolor</i>	Pomacanthidae
<i>Centropyge bispinosa</i>	Pomacanthidae
<i>Centropyge flavicauda</i>	Pomacanthidae
<i>Centropyge vrolikii</i>	Pomacanthidae
<i>Pomacanthus imperator</i>	Pomacanthidae
<i>Pomacanthus semicirculatus</i>	Pomacanthidae
<i>Pomacanthus sexstriatus</i>	Pomacanthidae
<i>Pomacanthus xanthonetapon</i>	Pomacanthidae
<i>Pygoplites diacanthus</i>	Pomacanthidae
<i>Abudefduf bengalensis</i>	Pomacentridae
<i>Abudefduf septemfasciatus</i>	Pomacentridae
<i>Abudefduf sexfasciatus</i>	Pomacentridae
<i>Abudefduf sordidus</i>	Pomacentridae
<i>Abudefduf vaigiensis</i>	Pomacentridae

<i>Abudefduf whitleyi</i>	Pomacentridae
<i>Acanthochromis polyacanthus</i>	Pomacentridae
<i>Amblyglyphidodon aureus</i>	Pomacentridae
<i>Amblyglyphidodon curacao</i>	Pomacentridae
<i>Amblyglyphidodon leucogaster</i>	Pomacentridae
<i>Amblypomacentrus breviceps</i>	Pomacentridae
<i>Amphiprion akindynos</i>	Pomacentridae
<i>Amphiprion chrysopterus</i>	Pomacentridae
<i>Amphiprion clarkia</i>	Pomacentridae
<i>Amphiprion melanopus</i>	Pomacentridae
<i>Amphiprion percula</i>	Pomacentridae
<i>Amphiprion perideraion</i>	Pomacentridae
<i>Cheiloprion labiatus</i>	Pomacentridae
<i>Chromis amboinensis</i>	Pomacentridae
<i>Chromis atripectoralis</i>	Pomacentridae
<i>Chromis atripes</i>	Pomacentridae
<i>Chromis caerulea</i>	Pomacentridae
<i>Chromis lepidolepis</i>	Pomacentridae
<i>Chromis margaritifer</i>	Pomacentridae
<i>Chromis nitida</i>	Pomacentridae
<i>Chromis retrofasciata</i>	Pomacentridae
<i>Chromis ternatensis</i>	Pomacentridae
<i>Chromis viridis</i>	Pomacentridae
<i>Chromis weberi</i>	Pomacentridae
<i>Chromis xanthochira</i>	Pomacentridae
<i>Chromis xanthura</i>	Pomacentridae
<i>Chrysiptera biocellata</i>	Pomacentridae
<i>Chrysiptera brownriggii</i>	Pomacentridae

<i>Chrysiptera cyanea</i>	Pomacentridae
<i>Chrysiptera flavipinnis</i>	Pomacentridae
<i>Chrysiptera glauca</i>	Pomacentridae
<i>Chrysiptera leucopoma</i>	Pomacentridae
<i>Chrysiptera rex</i>	Pomacentridae
<i>Chrysiptera rollandi</i>	Pomacentridae
<i>Chrysiptera talboti</i>	Pomacentridae
<i>Chrysiptera taupou</i>	Pomacentridae
<i>Chrysiptera tricineta</i>	Pomacentridae
<i>Chrysiptera unimaculata</i>	Pomacentridae
<i>Dascyllus aruanus</i>	Pomacentridae
<i>Dascyllus melanurus</i>	Pomacentridae
<i>Dascyllus reticulatus</i>	Pomacentridae
<i>Dascyllus trimaculatus</i>	Pomacentridae
<i>Dischistodus chrysopoecilus</i>	Pomacentridae
<i>Dischistodus melanotus</i>	Pomacentridae
<i>Dischistodus perspicillatus</i>	Pomacentridae
<i>Dischistodus prosopotaenia</i>	Pomacentridae
<i>Dischistodus pseudochrysopoecilus</i>	Pomacentridae
<i>Hemiglyphidodon plagiometopon</i>	Pomacentridae
<i>Neoglyphidodon melas</i>	Pomacentridae
<i>Neoglyphidodon nigroris</i>	Pomacentridae
<i>Neopomacentrus azysron</i>	Pomacentridae
<i>Neopomacentrus bankieri</i>	Pomacentridae
<i>Neopomacentrus cyanomos</i>	Pomacentridae
<i>Plectroglyphidodon dickii</i>	Pomacentridae
<i>Plectroglyphidodon johnstonianus</i>	Pomacentridae
<i>Plectroglyphidodon lacrymatus</i>	Pomacentridae

<i>Plectroglyphidodon leucozonus</i>	Pomacentridae
<i>Pomacentrus adelus</i>	Pomacentridae
<i>Pomacentrus amboinensis</i>	Pomacentridae
<i>Pomacentrus australis</i>	Pomacentridae
<i>Pomacentrus bankanensis</i>	Pomacentridae
<i>Pomacentrus brachialis</i>	Pomacentridae
<i>Pomacentrus chrysurus</i>	Pomacentridae
<i>Pomacentrus coelestis</i>	Pomacentridae
<i>Pomacentrus grammorhynchus</i>	Pomacentridae
<i>Pomacentrus imitator</i>	Pomacentridae
<i>Pomacentrus lepidogenys</i>	Pomacentridae
<i>Pomacentrus melanochir</i>	Pomacentridae
<i>Pomacentrus moluccensis</i>	Pomacentridae
<i>Pomacentrus nagasakiensis</i>	Pomacentridae
<i>Pomacentrus opisthostigma</i>	Pomacentridae
<i>Pomacentrus pavo</i>	Pomacentridae
<i>Pomacentrus philippinus</i>	Pomacentridae
<i>Pomacentrus proteus</i>	Pomacentridae
<i>Pomacentrus reidi</i>	Pomacentridae
<i>Pomacentrus tripunctatus</i>	Pomacentridae
<i>Pomacentrus vaiuli</i>	Pomacentridae
<i>Pomacentrus wardi</i>	Pomacentridae
<i>Premnas biaculeatus</i>	Pomacentridae
<i>Pristotis obtusirostris</i>	Pomacentridae
<i>Stegastes apicalis</i>	Pomacentridae
<i>Stegastes fasciolatus</i>	Pomacentridae
<i>Stegastes nigricans</i>	Pomacentridae
<i>Stegastes punctatus</i>	Pomacentridae

<i>Cypho purpurascens</i>	Pseudochromidae
<i>Ogilbyina queenslandiae</i>	Pseudochromidae
<i>Oxycercichthys veliferus</i>	Pseudochromidae
<i>Pictichromis coralensis</i>	Pseudochromidae
<i>Pseudochromis cyanotaenia</i>	Pseudochromidae
<i>Pseudochromis flammicauda</i>	Pseudochromidae
<i>Pseudochromis fuscus</i>	Pseudochromidae
<i>Pseudochromis paccagnellae</i>	Pseudochromidae
<i>Pseudoplesiops howensis</i>	Pseudochromidae
<i>Pseudoplesiops rosae</i>	Pseudochromidae
<i>Pseudoplesiops typus</i>	Pseudochromidae
<i>Dendrochirus zebra</i>	Scorpaenidae
<i>Parascorpaena aurita</i>	Scorpaenidae
<i>Parascorpaena mcadamsi</i>	Scorpaenidae
<i>Parascorpaena mossambica</i>	Scorpaenidae
<i>Pterois antennata</i>	Scorpaenidae
<i>Pterois volitans</i>	Scorpaenidae
<i>Scorpaenodes guamensis</i>	Scorpaenidae
<i>Scorpaenodes parvipinnis</i>	Scorpaenidae
<i>Scorpaenopsis diabolus</i>	Scorpaenidae
<i>Scorpaenopsis eschmeyeri</i>	Scorpaenidae
<i>Scorpaenopsis obtusa</i>	Scorpaenidae
<i>Scorpaenopsis papuensis</i>	Scorpaenidae
<i>Scorpaenopsis venosa</i>	Scorpaenidae
<i>Sebastapistes cyanostigma</i>	Scorpaenidae
<i>Sebastapistes strongia</i>	Scorpaenidae
<i>Aethaloperca rogae</i>	Serranidae
<i>Anyperodon leucogrammicus</i>	Serranidae

<i>Cephalopholis argus</i>	Epinephelidae
<i>Cephalopholis cyanostigma</i>	Epinephelidae
<i>Cephalopholis microprion</i>	Epinephelidae
<i>Cephalopholis pachycentron</i>	Epinephelidae
<i>Cephalopholis sonnerati</i>	Epinephelidae
<i>Cephalopholis urodeta</i>	Epinephelidae
<i>Chromileptes altivelis</i>	Serranidae
<i>Diploprion bifasciatum</i>	Serranidae
<i>Epinephelus coeruleopunctatus</i>	Serranidae
<i>Epinephelus corallicola</i>	Serranidae
<i>Epinephelus cyanopodus</i>	Serranidae
<i>Epinephelus fasciatus</i>	Serranidae
<i>Epinephelus fuscoguttatus</i>	Serranidae
<i>Epinephelus howlandi</i>	Serranidae
<i>Epinephelus maculatus</i>	Serranidae
<i>Epinephelus maculatus</i>	Serranidae
<i>Epinephelus malabaricus</i>	Serranidae
<i>Epinephelus merra</i>	Serranidae
<i>Epinephelus ongus</i>	Serranidae
<i>Epinephelus polyphekadion</i>	Serranidae
<i>Epinephelus quoyanus</i>	Serranidae
<i>Epinephelus sexfasciatus</i>	Serranidae
<i>Epinephelus tukula</i>	Serranidae
<i>Gracila albomarginata</i>	Serranidae
<i>Grammistes sexlineatus</i>	Serranidae
<i>Plectranthias longimanus</i>	Serranidae
<i>Plectropomus areolatus</i>	Serranidae
<i>Plectropomus laevis</i>	Serranidae

<i>Plectropomus leopardus</i>	Serranidae
<i>Pseudanthias squamipinnis</i>	Serranidae
<i>Pseudogramma polyacantha</i>	Serranidae
<i>Rainfordia opercularis</i>	Serranidae
<i>Variola louti</i>	Serranidae
<i>Siganus argenteus</i>	Siganidae
<i>Siganus corallinus</i>	Siganidae
<i>Siganus doliatus</i>	Siganidae
<i>Siganus fuscescens</i>	Siganidae
<i>Siganus lineatus</i>	Siganidae
<i>Siganus puellus</i>	Siganidae
<i>Siganus punctatissimus</i>	Siganidae
<i>Siganus punctatus</i>	Siganidae
<i>Siganus spinus</i>	Siganidae
<i>Siganus virgatus</i>	Siganidae
<i>Siganus vulpinus</i>	Siganidae
<i>Sphyraena barracuda</i>	Sphyraenidae
<i>Sphyraena forsteri</i>	Sphyraenidae
<i>Sphyraena jello</i>	Sphyraenidae
<i>Sphyraena obtusata</i>	Sphyraenidae
<i>Sphyraena qenie</i>	Sphyraenidae
<i>Amniataba caudavittata</i>	Terapontidae
<i>Pelates quadrilineatus</i>	Terapontidae
<i>Terapon jarbua</i>	Terapontidae
<i>Terapon theraps</i>	Terapontidae
<i>Arothron hispidus</i>	Tetraodontidae
<i>Arothron manilensis</i>	Tetraodontidae
<i>Arothron mappa</i>	Tetraodontidae

<i>Arothron nigropunctatus</i>	Tetraodontidae
<i>Arothron stellatus</i>	Tetraodontidae
<i>Canthigaster bennetti</i>	Tetraodontidae
<i>Canthigaster compressa</i>	Tetraodontidae
<i>Canthigaster janthinoptera</i>	Tetraodontidae
<i>Canthigaster papua</i>	Tetraodontidae
<i>Canthigaster rivulata</i>	Tetraodontidae
<i>Canthigaster solandri</i>	Tetraodontidae
<i>Canthigaster valentine</i>	Tetraodontidae
<i>Feroxodon multistriatus</i>	Tetraodontidae
<i>Torquigener parcuspinus</i>	Tetraodontidae
<i>Zanclus cornutus</i>	Zanclidae

b) Orders and families of fish from Lizard Island, and whether or not they were included in the 102 teleost species sampled for the standard length at settlement in ESM Fig. S1

Order	Family	Included in this study
Anguilliformes	Congridae	No
	Moringuidae	No
	Ophichthidae	No
	Chlopsidae	No
	Muraenidae	No
Atheriniformes	Atherinidae	Yes
Aulopiformes	Notosudidae	No
	Synodontidae	No
Batrachoidiformes		No
Beloniformes	Belonidae	No
	Hemiramphidae	No
Beryciformes	Holocentridae	Yes
Clupeiformes	Clupeidae	Yes
	Engraulidae	No
Elopiformes	Megalopidae	No

Gasterosteiformes	Aulostomidae	No
	Centriscidae	No
	Fistulariidae	No
	Solenostomidae	No
	Syngnathiidae	No
Gonorhynchiformes	Chanidae	No
Lophiiformes	Antennariidae	No
Mugiliformes	Mugilidae	No
Myctophiformes	Myctophidae	No
Ophidiiformes	Bythitidae	No
	Carapidae	No
	Ophidiidae	No
Perciformes	Acanthuridae	Yes
	Apogonidae	Yes
	Blenniidae	Yes
	Caesionidae	Yes
	Callionymidae	Yes
	Carangidae	Yes
	Centropomidae	No
	Cepolidae	No
	Chaetodontidae	Yes

Cirrhitidae	No
Creediidae	No
Eleotridae	No
Ephippidae	Yes
Gerreidae	No
Gobiesocisae	No
Gobiidae	Yes
Haemulidae	No
Istiophoridae	No
Kraemeriidae	No
Kyphosidae	No
Labridae	Yes
Lethrinidae	Yes
Lutjanidae	Yes
Microdesmatidae	No
Monodactylidae	No
Mullidae	Yes
Nemipteridae	Yes
Nomeidae	Yes
Opistognathidae	No
Pempheridae	No
Pinguipedidae	No
Plesiopidae	Yes
Pomacanthidae	Yes
Pomacentridae	Yes
Priacanthidae	No
Pseudochromidae	Yes
Rachycentridae	No

	Scatophagidae	No
	Schindleriidae	No
	Scombridae	No
	Serranidae	Yes
	Siganidae	Yes
	Sillaginidae	No
	Sphyraenidae	Yes
	Terapontidae	Yes
	Trichonotidae	No
	Trypterigiidae	No
	Zanclidae	Yes
Pleuronectiformes		
	Bothidae	No
	Psettodidae	No
	Soleidae	No
Scorpaeniformes		
	Aploactinidae	No
	Caracanthidae	No
	Dactylopteridae	No
	Scorpaenidae	Yes
	Synanceiidae	No
	Platycephalidae	No
Tetraodontiformes		
	Balistidae	Yes
	Diodontidae	Yes
	Monacanthidae	Yes
	Ostraciidae	No
	Tetraodontidae	Yes

Table S3 Summary information on fish and gnathiid isopods in gnathiid experiment. Sample size of fish exposed to no gnathiid (control) or one gnathiid (gnathiid) treatment, mean (SE) standard length of fish species type tested, the number of fish that died, and the number of gnathiids that had fed, not fed, or were eaten in the gnathiid exposed treatment

Fish species type	Treatment sample size		Fish standard length (mm)		Number of fish died		Number of gnathiids		
	Control	Gnathiid	Control	Gnathiid	Control	Gnathiid	Fed	Not fed	Eaten
Presettler Apogonidae ²	17	16	7.0 (0.1)	6.8 (0.1)	1	6	8	7	1
Presettler Pomacentridae ³	36	35	8.9 (0.1)	8.8 (0.1)	0	17	25	9	1
<i>Chromis</i> sp	20	20	8.8 (0.2)	8.9 (0.2)	0	0	7	11	2
<i>Dischistodus</i> sp	20	23	9.1 (0.1)	9.4 (0.1)	0	0	12	10	1
<i>Neoglyphidodon melas</i>	15	15	9.7 (0.1)	9.7 (0.2)	0	1	9	3	3
<i>Scolopsis bilineatus</i>	20	22	9.7 (0.1)	9.7 (0.1)	0	1	12	5	5
<i>Chromis rollandi</i>	12	12	9.8 (0.1)	10.1 (0.1)	0	0	4	7	1
<i>Pomacentrus moluccensis</i>	15	14	10.9 (0.1)	11.1 (0.1)	1	0	8	2	4
<i>Neopomacentrus</i> sp	21	23	12.5 (0.1)	12.6 (0.1)	0	0	10	4	9
yellowbluelines	11	11	12.6 (0.1)	12.6 (0.1)	0	0	4	7	0
bluelinedhead	7	7	13.0 (0.2)	12.7 (0.2)	0	0	5	0	2
<i>Pomacentrus nagasakiensis</i>	12	14	13.1 (0.2)	13.3 (0.1)	3	1	6	4	4
<i>Pomacentrus coelestis</i>	9	9	14.1 (0.3)	14.9 (0.5)	0	0	1	3	5
<i>Plectropomus</i> sp	13	17	17.8 (0.1)	17.7 (0.2)	0	0	13	2	2

Table S4 Statistical results of bayesian analyses. a) Fish mortality exposed to a micropredatory gnathiid isopod or no gnathiid in relation to fish standard length (SL), b) gnathiid feeding success in relation to fish SL, and c) gnathiid mortality in relation to fish SL. Strong relationships are ones where the 95% central posterior density interval (CrI) does not encompass zero, and are in bold

	Parameter estimate	Standard deviation	95% Central posterior density interval (CrI)
a) Fish mortality			
Intercept	-0.1.7320	6.2437	-14.115 to 10.2148
Gnathiid treatment x Fish SL	-1.2914	0.3865	-2.120 to -0.6071
Gnathiid treatment	14.1035	14.1035	7.376 to 22.2349
Fish SL	-0.7084	0.4578	-1.673 to 0.1092
b) Gnathiid feeding success			
Intercept	-0.74461	1.00301	-2.5979 to 1.3757
Fish SL	0.04455	0.07568	-0.1132 to 0.1867
c) Gnathiid mortality			
Intercept	-2.85040	1.4005	-5.46846 to 0.1100
Fish SL	0.04862	0.1115	-0.19192 to 0.2471